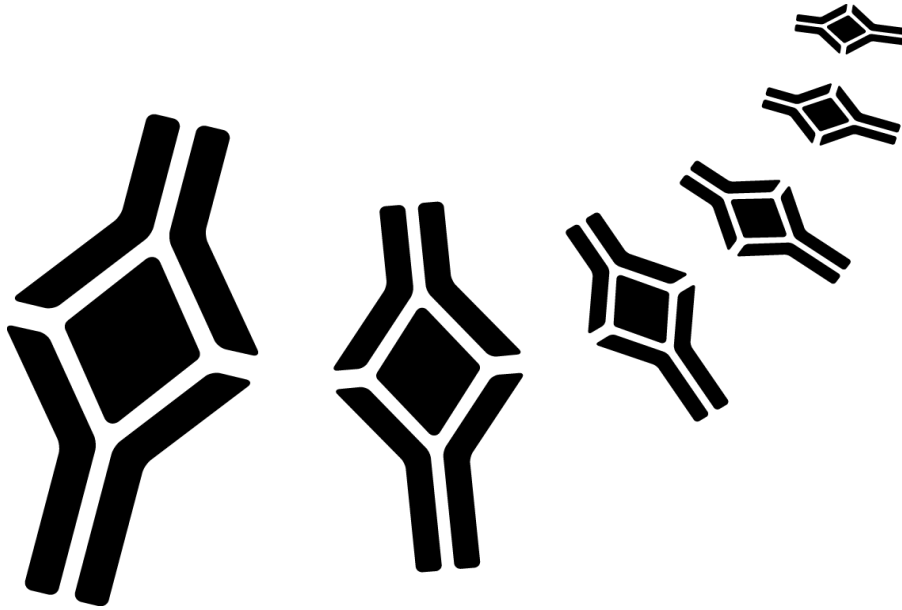


**BioVendor**

Research  
and Diagnostic Products



## Mouse IL-15/IL-15R ELISA

Product Data Sheet

Cat. No.: RAF037R

For Research Use Only

## CONTENTS

---

|     |  |    |
|-----|--|----|
| f1. | INTENDED USE                                 | 3  |
| 2.  | SUMMARY                                      | 3  |
| 3.  | PRINCIPLES OF THE TEST                       | 4  |
| 4.  | REAGENTS PROVIDED                            | 5  |
| 5.  | STORAGE INSTRUCTIONS – ELISA KIT             | 5  |
| 6.  | SPECIMEN COLLECTION AND STORAGE INSTRUCTIONS | 6  |
| 7.  | MATERIALS REQUIRED BUT NOT PROVIDED          | 6  |
| 8.  | PRECAUTIONS FOR USE                          | 7  |
| 9.  | PREPARATION OF REAGENTS                      | 8  |
| 10. | TEST PROTOCOL                                | 10 |
| 11. | CALCULATION OF RESULTS                       | 12 |
| 12. | LIMITATIONS                                  | 15 |
| 13. | PERFORMANCE CHARACTERISTICS                  | 15 |
| 14. | REAGENT PREPARATION SUMMARY                  | 20 |
| 15. | TEST PROTOCOL SUMMARY                        | 21 |

**➤➤ This kit is manufactured by:  
BioVendor – Laboratorní medicína a.s.**

**➤➤ Use only the current version of Product Data Sheet enclosed with the kit!**

## 1. INTENDED USE

---

The mouse IL-15/IL-15R ELISA is an enzyme-linked immunosorbent assay for the quantitative detection of mouse IL-15/IL-15R. **The mouse IL-15/IL-15R ELISA is for research use only. Not for diagnostic or therapeutic procedures.**

## 2. SUMMARY

---

Interleukin-15 (IL-15) is a 14 kDa proinflammatory protein that has been shown to play a role in the activation of neutrophils, dendritic cells, and macrophages, and is essential to the development and survival of NK cells and CD8 T-cells. IL-15 activates Jak/Stat pathways by signaling through a heterotrimeric receptor. Two of the subunits of this receptor,  $\beta$  and  $\gamma$ , are shared with the IL-2 receptor, while the  $\alpha$  subunit is unique to IL-15.

Despite the expression of IL-15 mRNA in many cell types, the secreted protein is rarely detectable in biological samples. Recent research suggests that IL-15 is retained inside the cell and is only secreted in complex with its unique receptor, IL-15R alpha. This chaperoning is required from the ER to Golgi through to secretion. The cytokine/receptor complex may stay bound to the cell surface, where it can be trans-presented to cells expressing the  $\beta\gamma$  subunits of the receptor, or may be secreted in a soluble form that lacks the transmembrane domain of the receptor. The soluble IL-15/IL-15R complex is produced by mouse dendritic cells, fibroblasts, and macrophages, and demonstrates a 10-100-fold increase in agonistic activity over IL-15 alone.

### 3. PRINCIPLES OF THE TEST

An anti-mouse IL-15/IL-15R coating antibody is adsorbed onto microwells.

Mouse IL-15/IL-15R present in the sample or standard binds to antibodies adsorbed to the microwells and a biotin-conjugated anti-mouse IL-15/IL-15R antibody is added and binds to mouse IL-15/IL-15R captured by the first antibody.

Following incubation unbound biotin-conjugated anti-mouse IL-15/IL-15R antibody is removed during a wash step. Streptavidin-HRP is added and binds to the biotin-conjugated anti-mouse IL-15/IL-15R antibody.

Following incubation unbound Streptavidin-HRP is removed during a wash step, and substrate solution reactive with HRP is added to the wells.

Figure 1

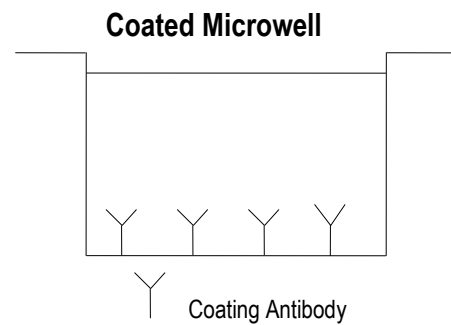


Figure 2

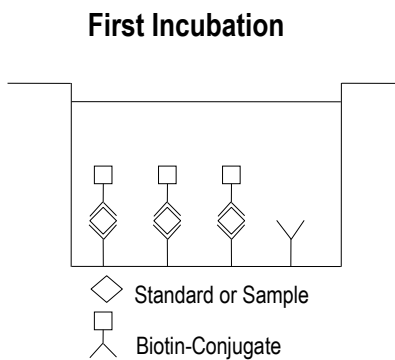


Figure 3

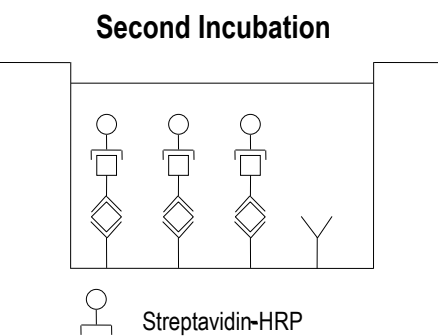
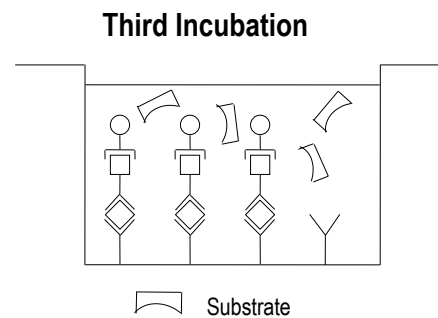
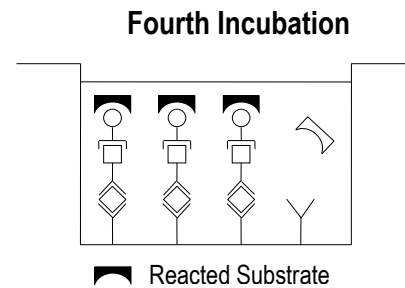


Figure 4



A coloured product is formed in proportion to the amount of mouse IL-15/IL-15R present in the sample or standard. The reaction is terminated by addition of acid and absorbance is measured at 450 nm. A standard curve is prepared from 7 mouse IL-15/IL-15R standard dilutions and mouse IL-15/IL-15R sample concentration determined.

Figure 5



#### 4. REAGENTS PROVIDED

- 1 aluminium pouch with a Microwell Plate coated with monoclonal antibody to mouse IL-15/IL-15R
- 1 vial (70 µl) **Biotin-Conjugate** anti- mouse IL-15/IL-15R polyclonal antibody
- 1 vial (150 µl) **Streptavidin-HRP**
- 2 vials mouse IL-15/IL-15R **Standard** lyophilized, 400 pg/ml upon reconstitution
- 1 vial (12 ml) **Sample Diluent**
- 1 vial (5 ml) **Assay Buffer Concentrate** 20x (PBS with 1% Tween 20 and 10% BSA)
- 1 bottle (5 ml) **Calibrator Diluent**
- 1 bottle (50 ml) **Wash Buffer Concentrate** 20x (PBS with 1% Tween 20)
- 1 vial (15 ml) **Substrate Solution** (tetramethyl-benzidine)
- 1 vial (15 ml) **Stop Solution** (1M Phosphoric acid)
- 4 **Adhesive Films**

#### 5. STORAGE INSTRUCTIONS – ELISA KIT

Store kit reagents between 2°C and 8°C. Immediately after use remaining reagents should be returned to cold storage (2°C to 8°C). Expiry of the kit and reagents is stated on labels.

Expiry of the kit components can only be guaranteed if the components are stored properly, and if, in case of repeated use of one component, this reagent is not contaminated by the first handling.

## 6. SPECIMEN COLLECTION AND STORAGE INSTRUCTIONS

---

Cell culture supernatant, serum and plasma (EDTA) were tested with this assay. Other biological samples might be suitable for use in the assay. Remove serum or plasma from the clot or cells as soon as possible after clotting and separation.

Pay attention to a possible **“Hook Effect”** due to high sample concentrations (see chapter **Chyba! Nenalezen zdroj odkazů.**)

Samples containing a visible precipitate must be clarified prior to use in the assay. Do not use grossly hemolyzed or lipemic specimens.

Samples should be aliquoted and must be stored frozen at -20°C to avoid loss of bioactive mouse IL-15/IL-15R. If samples are to be run within 24 hours, they may be stored at 2° to 8°C (for stability refer to 13.5).

Avoid repeated freeze-thaw cycles. Prior to assay, the frozen sample should be brought to room temperature slowly and mixed gently.

## 7. MATERIALS REQUIRED BUT NOT PROVIDED

---

- 5 ml and 10 ml graduated pipettes
- 5 µl to 1000 µl adjustable single channel micropipettes with disposable tips
- 50 µl to 300 µl adjustable multichannel micropipette with disposable tips
- Multichannel micropipette reservoir
- Beakers, flasks, cylinders necessary for preparation of reagents
- Device for delivery of wash solution (multichannel wash bottle or automatic wash system)
- Microplate shaker
- Microwell strip reader capable of reading at 450 nm (620 nm as optional reference wave length)
- Glass-distilled or deionized water
- Statistical calculator with program to perform regression analysis

## 8. PRECAUTIONS FOR USE

---

- All reagents should be considered as potentially hazardous. We therefore recommend that this product is handled only by those persons who have been trained in laboratory techniques and that it is used in accordance with the principles of good laboratory practice. Wear suitable protective clothing such as laboratory overalls, safety glasses and gloves. Care should be taken to avoid contact with skin or eyes. In the case of contact with skin or eyes wash immediately with water. See material safety data sheet(s) and/or safety statement(s) for specific advice.
- Reagents are intended for research use only and are not for use in diagnostic or therapeutic procedures.
- Do not mix or substitute reagents with those from other lots or other sources.
- Do not use kit reagents beyond expiration date on label.
- Do not expose kit reagents to strong light during storage or incubation.
- Do not pipette by mouth.
- Do not eat or smoke in areas where kit reagents or samples are handled.
- Avoid contact of skin or mucous membranes with kit reagents or specimens.
- Rubber or disposable latex gloves should be worn while handling kit reagents or specimens.
- Avoid contact of substrate solution with oxidizing agents and metal.
- Avoid splashing or generation of aerosols.
- In order to avoid microbial contamination or cross-contamination of reagents or specimens which may invalidate the test use disposable pipette tips and/or pipettes.
- Use clean, dedicated reagent trays for dispensing the conjugate and substrate reagent.
- Exposure to acid inactivates the conjugate.
- Glass-distilled water or deionized water must be used for reagent preparation.
- Substrate solution must be at room temperature prior to use.
- Decontaminate and dispose specimens and all potentially contaminated materials as they could contain infectious agents. The preferred method of decontamination is autoclaving for a minimum of 1 hour at 121.5°C.
- Liquid wastes not containing acid and neutralized waste may be mixed with sodium hypochlorite in volumes such that the final mixture contains 1.0% sodium hypochlorite. Allow 30 minutes for effective decontamination. Liquid waste containing acid must be neutralized prior to the addition of sodium hypochlorite.

## 9. PREPARATION OF REAGENTS

**Buffer Concentrates** should be brought to room temperature and should be diluted before starting the test procedure.

If crystals have formed in the **Buffer Concentrates**, warm them gently until they have completely dissolved.

### 9.1. Wash Buffer (1x)

Pour entire contents (50 ml) of the **Wash Buffer Concentrate (20x)** into a clean 1000 ml graduated cylinder. Bring to final volume of 1000 ml with glass-distilled or deionized water.

Mix gently to avoid foaming.

Transfer to a clean wash bottle and store at 2° to 25°C. Please note that Wash Buffer (1x) is stable for 30 days.

Wash Buffer (1x) may also be prepared as needed according to the following table:

| Number of Strips | Wash Buffer Concentrate (20x) (ml) | Distilled Water (ml) |
|------------------|------------------------------------|----------------------|
| 1 - 6            | 25                                 | 475                  |
| 1 - 12           | 50                                 | 950                  |

### 9.2. Assay Buffer (1x)

Pour the entire contents (5 ml) of the **Assay Buffer Concentrate (20x)** into a clean 100 ml graduated cylinder. Bring to final volume of 100 ml with distilled water. Mix gently to avoid foaming.

Store at 2° to 8°C. Please note that the Assay Buffer (1x) is stable for 30 days.

Assay Buffer (1x) may also be prepared as needed according to the following table:

| Number of Strips | Assay Buffer Concentrate (20x) (ml) | Distilled Water (ml) |
|------------------|-------------------------------------|----------------------|
| 1 - 6            | 2.5                                 | 47.5                 |
| 1 - 12           | 5.0                                 | 95.0                 |

### 9.3. Biotin-Conjugate

**Please note that the Biotin-Conjugate should be used within 30 minutes after dilution.**

Make a 1:100 dilution of the concentrated **Biotin-Conjugate** solution with Assay Buffer (1x) in a clean plastic tube as needed according to the following table:

| Number of Strips | Biotin-Conjugate (ml) | Assay Buffer (1x) (ml) |
|------------------|-----------------------|------------------------|
| 1 - 6            | 0.03                  | 2.97                   |
| 1 - 12           | 0.06                  | 5.94                   |



#### 9.4. Streptavidin-HRP

Please note that the Streptavidin-HRP should be used within 30 minutes after dilution.

Make a 1:200 dilution of the concentrated **Streptavidin-HRP** solution with Assay Buffer (1x) in a clean plastic tube as needed according to the following table:

| Number of Strips | Streptavidin-HRP (ml) | Assay Buffer (1x) (ml) |
|------------------|-----------------------|------------------------|
| 1 - 6            | 0.03                  | 5.97                   |
| 1 - 12           | 0.06                  | 11.94                  |

#### 9.5. Mouse IL-15/IL-15R Standard

Reconstitute mouse IL-15/IL-15R standard by addition of Calibrator Diluent.

Reconstitution volume is stated on the label of the standard vial. Swirl or mix gently to insure complete and homogeneous solubilization (concentration of reconstituted standard = 400 pg/ml).

Allow the standard to reconstitute for 10-30 minutes. Mix well prior to making dilutions.

The standard has to be used immediately after reconstitution and cannot be stored.

##### 9.5.1 External Standard Dilution

Label 6 tubes, one for each standard point.

S2, S3, S4, S5, S6, S7

The reconstituted standard serves as S1.

Then prepare 1:2 serial dilutions for the standard curve as follows:

Pipette 150 µl of Calibrator Diluent into each tube S2-S7.

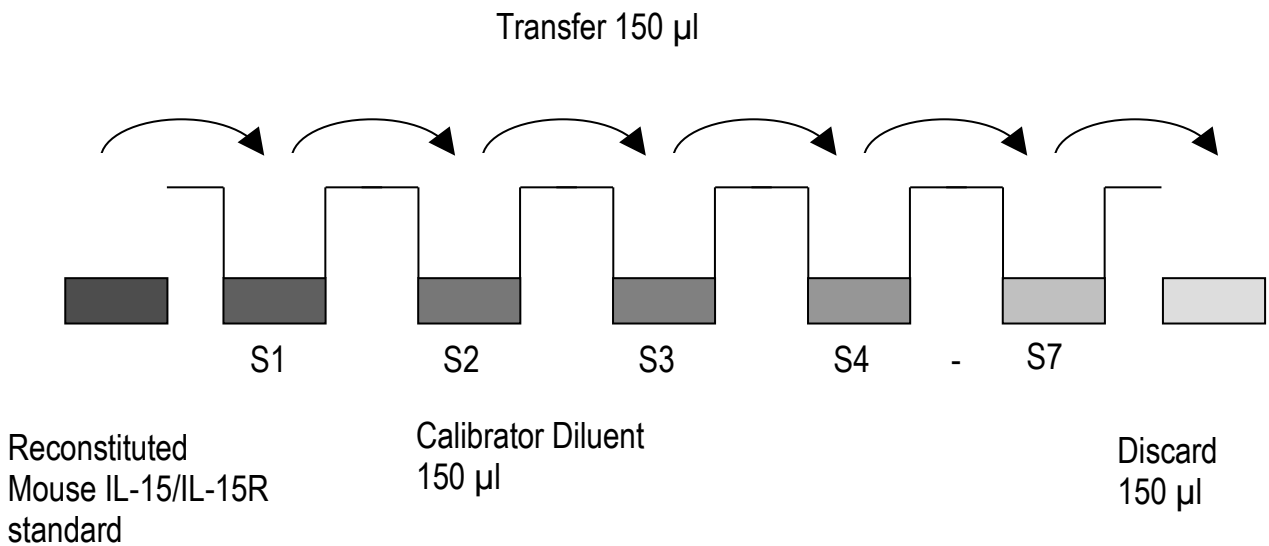
Pipette 150 µl of reconstituted standard (concentration = 400 pg/ml) into the first tube, labelled S2, and mix (concentration of standard 2 = 200 pg/ml).

Pipette 150 µl of this dilution into the second tube, labelled S3, and mix thoroughly before the next transfer.

Repeat serial dilutions 4 more times thus creating the points of the standard curve (see Figure 6).

Calibrator Diluent serves as blank.

Figure 6



## 10. TEST PROTOCOL

- a. Determine the number of microwell strips required to test the desired number of samples plus appropriate number of wells needed for running blanks and standards. Each sample, standard, blank and optional control sample should be assayed in duplicate. Remove extra microwell strips from holder and store in foil bag with the desiccant provided at 2°-8°C sealed tightly.
- b. Wash the microwell strips twice with approximately 400  $\mu$ l **Wash Buffer** per well with thorough aspiration of microwell contents between washes. Allow the Wash Buffer to sit in the wells for about **10 – 15 seconds** before aspiration.  
Take care not to scratch the surface of the microwells. After the last wash step, empty wells and tap microwell strips on absorbent pad or paper towel to remove excess Wash Buffer. Use the microwell strips immediately after washing. Alternatively microwell strips can be placed upside down on a wet absorbent paper for not longer than 15 minutes. **Do not allow wells to dry.**

Table depicting an example of the arrangement of blanks, standards and samples in the microwell strips:

|   | 1                           | 2                           | 3        | 4        |
|---|-----------------------------|-----------------------------|----------|----------|
| A | Standard 1<br>(400.0 pg/ml) | Standard 1<br>(400.0 pg/ml) | Sample 1 | Sample 1 |
| B | Standard 2<br>(200.0 pg/ml) | Standard 2<br>(200.0 pg/ml) | Sample 2 | Sample 2 |
| C | Standard 3<br>(100.0 pg/ml) | Standard 3<br>(100.0 pg/ml) | Sample 3 | Sample 3 |
| D | Standard 4<br>(50.0 pg/ml)  | Standard 4<br>(50.0 pg/ml)  | Sample 4 | Sample 4 |
| E | Standard 5<br>(25.0 pg/ml)  | Standard 5<br>(25.0 pg/ml)  | Sample 5 | Sample 5 |
| F | Standard 6<br>(12.5 pg/ml)  | Standard 6<br>(12.5 pg/ml)  | Sample 6 | Sample 6 |
| G | Standard 7<br>(6.3 pg/ml)   | Standard 7<br>(6.3 pg/ml)   | Sample 7 | Sample 7 |
| H | Blank                       | Blank                       | Sample 8 | Sample 8 |

- c. Add 50 µl of **Sample Diluent** to all wells.
- d. Add 50 µl mouse IL-15/IL15R standard in duplicate to designated **standard wells**.
- e. Add 50 µl of Calibrator Diluent in duplicate to the **blank wells**.
- f. Add 50 µl of each sample in duplicate to the **sample wells**.
- g. Prepare **Biotin-Conjugate** (see Preparation of Biotin-Conjugate 9.3).
- h. Add 50 µl of diluted **Biotin-Conjugate** to all wells, including the blank wells.
- i. Cover with an adhesive film and incubate at room temperature (18 to 25°C) for 2 hours on a microplate shaker.
- j. Prepare **Streptavidin-HRP** (refer to Preparation of Streptavidin-HRP 9.4).
- k. Remove adhesive film and empty wells. **Wash** microwell strips 4 times according to point b of the test protocol. Proceed immediately to the next step.
- l. Add 100 µl of diluted **Streptavidin-HRP** to all wells, including the blank wells.

- m. Cover with an adhesive film and incubate at room temperature (18 to 25°C) for 1 hour on a microplate shaker.
- n. Remove adhesive film and empty wells. **Wash** microwell strips 4 times according to point b of the test protocol. Proceed immediately to the next step.
- o. Pipette 100 µl of **TMB Substrate Solution** to all wells.
- p. Incubate the microwell strips at room temperature (18 to 25°C) for about 30 min. Avoid direct exposure to intense light.

**The colour development on the plate should be monitored and the substrate reaction stopped (see next point of this protocol) before positive wells are no longer properly recordable. Determination of the ideal time period for colour development has to be done individually for each assay.**

It is recommended to add the stop solution when the highest standard has developed a dark blue colour. Alternatively the colour development can be monitored by the ELISA reader at 620 nm. The substrate reaction should be stopped as soon as Standard 1 has reached an OD of 0.9 – 0.95.

- q. Stop the enzyme reaction by quickly pipetting 100 µl of **Stop Solution** into each well. It is important that the Stop Solution is spread quickly and uniformly throughout the microwells to completely inactivate the enzyme. Results must be read immediately after the Stop Solution is added or within one hour if the microwell strips are stored at 2 - 8°C in the dark.
- r. Read absorbance of each microwell on a spectro-photometer using 450 nm as the primary wave length (optionally 620 nm as the reference wave length; 610 nm to 650 nm is acceptable). Blank the plate reader according to the manufacturer's instructions by using the blank wells. Determine the absorbance of both the samples and the standards.

## 11. CALCULATION OF RESULTS

---

- Calculate the average absorbance values for each set of duplicate standards and samples. Duplicates should be within 20 per cent of the mean value.
- Create standard curve by plotting the mean absorbance for each standard concentration on the ordinate against the mouse IL-15/IL-15R concentration on the abscissa. Draw a best fit curve through the points of the graph (a 5-parameter curve fit is recommended).
- To determine the concentration of circulating mouse IL-15/IL-15R for each sample, first find the mean absorbance value on the ordinate and extend a horizontal line to the standard curve. At the point of intersection, extend a vertical line to the abscissa and read the corresponding mouse IL-15/IL-15R concentration.
- **If instructions in this protocol have been followed, samples have not been diluted and the concentration read from the standard curve must not be multiplied by the dilution factor.**
- **Calculation of samples with a concentration exceeding standard 1 may result in incorrect, low mouse IL-15/IL-15R levels (Hook Effect). Such samples require further external predilution according to expected mouse IL-15/IL-15R values with Sample Diluent in order to precisely quantitate the actual mouse IL-15/IL-15R level.**

- It is suggested that each testing facility establishes a control sample of known mouse IL-15/IL-15R concentration and runs this additional control with each assay. If the values obtained are not within the expected range of the control, the assay results may be invalid.
- A representative standard curve is shown in Figure. This curve cannot be used to derive test results. Each laboratory must prepare a standard curve for each group of microwell strips assayed.

Figure 1

Representative standard curve for mouse IL-15/IL-15R ELISA. mouse IL-15/IL-15R was diluted in serial 2-fold steps in Calibrator Diluent. Do not use this standard curve to derive test results. A standard curve must be run for each group of microwell strips assayed.

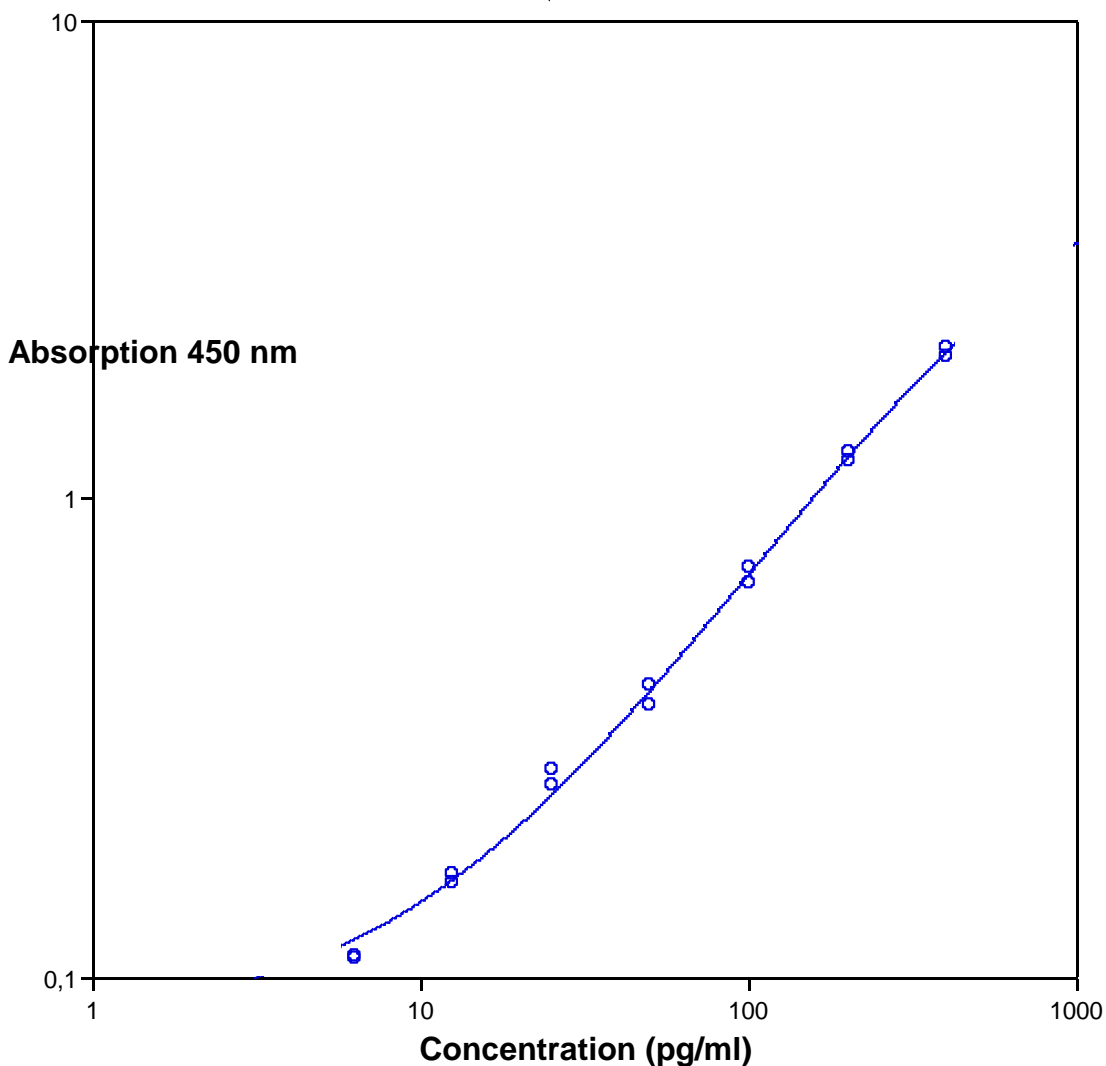


Table 1  
 Typical data using the Mouse IL-15/IL-15R  
 Measuring wavelength: 450 nm  
 Reference wavelength: 620 nm

| Standard | mouse<br>IL-15/IL-15R<br>Concentration<br>(pg/ml) | O.D. at<br>450 nm | Mean<br>O.D. at<br>450 nm | C.V.<br>(%) |
|----------|---|-------------------|---------------------------|-------------|
| 1        | 400.0   | 2.086<br>2.087    | 2.086                     | 0.0         |
| 2        | 200.0   | 1.208<br>1.258    | 1.233                     | 2.0         |
| 3        | 100.0   | 0.668<br>0.720    | 0.694                     | 3.8         |
| 4        | 50.0  | 0.371<br>0.411    | 0.391                     | 5.1         |
| 5        | 25.0  | 0.272<br>0.254    | 0.263                     | 3.3         |
| 6        | 12.5  | 0.158<br>0.165    | 0.162                     | 2.0         |
| 7        | 6.3   | 0.111<br>0.110    | 0.111                     | 0.6         |
| Blank    | 0.0   | 0.051<br>0.052    | 0.051                     | 0.8         |

The OD values of the standard curve may vary according to the conditions of assay performance (e.g. operator, pipetting technique, washing technique or temperature effects). Furthermore shelf life of the kit may affect enzymatic activity and thus colour intensity. Values measured are still valid.

## 12. LIMITATIONS

---

- Since exact conditions may vary from assay to assay, a standard curve must be established for every run.
- Bacterial or fungal contamination of either screen samples or reagents or cross-contamination between reagents may cause erroneous results.
- Disposable pipette tips, flasks or glassware are preferred, reusable glassware must be washed and thoroughly rinsed of all detergents before use.
- Improper or insufficient washing at any stage of the procedure will result in either false positive or false negative results. Empty wells completely before dispensing fresh wash solution, fill with Wash Buffer as indicated for each wash cycle and do not allow wells to sit uncovered or dry for extended periods.

## 13. PERFORMANCE CHARACTERISTICS

---

### 13.1. Sensitivity

The limit of detection of Mouse IL-15/IL15R defined as the analyte concentration resulting in an absorbance significantly higher than that of the dilution medium (mean plus 2 standard deviations) was determined to be 2.0 pg/ml (mean of 6 independent assays).

### 13.2. Reproducibility

#### 13.2.1. Intra-assay

Reproducibility within the assay was evaluated in 3 independent experiments. Each assay was carried out with 6 replicates of 8 serum samples containing different concentrations of mouse IL-15/IL15R. 2 standard curves were run on each plate. Data below show the mean mouse IL-15/IL15R concentration and the coefficient of variation for each sample (see Table 3). The calculated overall intra-assay coefficient of variation was 5.3%.

Table 2

The mean mouse IL-15/IL-15R concentration and the coefficient of variation for each sample

| Sample | Experiment | Mean mouse IL-15/IL-15R Concentration (pg/ml) | Coefficient of Variation (%) |
|--------|------------|---|------------------------------|
| 1      | 1          | 269.47  | 2.4                          |
|        | 2          | 280.74  | 2.0                          |
|        | 3          | 295.31  | 2.8                          |
| 2      | 1          | 192.93  | 6.5                          |
|        | 2          | 200.41  | 2.9                          |
|        | 3          | 217.88  | 1.8                          |
| 3      | 1          | 163.07  | 5.6                          |
|        | 2          | 176.46  | 3.4                          |
|        | 3          | 188.24  | 5.1                          |
| 4      | 1          | 100.26  | 3.8                          |
|        | 2          | 107.75  | 3.2                          |
|        | 3          | 94.11   | 3.5                          |
| 5      | 1          | 43.17   | 3.4                          |
|        | 2          | 47.89   | 6.4                          |
|        | 3          | 46.66   | 4.9                          |
| 6      | 1          | 19.83   | 8.5                          |
|        | 2          | 24.27   | 5.0                          |
|        | 3          | 22.24   | 5.4                          |
| 7      | 1          | 18.42   | 5.2                          |
|        | 2          | 19.61   | 8.0                          |
|        | 3          | 19.57   | 10.4                         |
| 8      | 1          | 14.34   | 8.2                          |
|        | 2          | 15.69   | 11.0                         |
|        | 3          | 16.37   | 8.5                          |

### 13.2.2. Inter-assay

Assay to assay reproducibility within one laboratory was evaluated in 3 independent experiments. Each assay was carried out with 6 replicates of 8 serum samples containing different concentrations of mouse IL-15/IL-15R. 2 standard curves were run on each plate. Data below show the mean mouse IL-15/IL-15R concentration and the coefficient of variation calculated on 18 determinations of each sample (see Table 4). The calculated overall inter-assay coefficient of variation was 6.3%.

Table 3

The mean mouse IL-15/IL-15R concentration and the coefficient of variation of each sample



| Sample | Mean mouse IL-15/IL-15R Concentration (pg/ml) | Coefficient of Variation (%) |
|--------|---|------------------------------|
| 1      | 281.84  | 4.6                          |
| 2      | 203.74  | 6.3                          |
| 3      | 175.93  | 7.2                          |
| 4      | 100.70  | 6.8                          |
| 5      | 45.91   | 5.3                          |
| 6      | 22.11   | 10.0                         |
| 7      | 19.20   | 3.5                          |
| 8      | 15.47   | 6.7                          |

### 13.3. Spiking Recovery

The spike recovery was evaluated by spiking 3 levels of mouse IL-15/IL15R into serum, plasma (EDTA) and cell culture supernatant. Recoveries were determined with 2 replicates each. The amount of endogenous mouse IL-15/IL-15R in unspiked samples was subtracted from the spike values.

For recovery data see Table 5.

| Sample matrix            | Spike high Mean (%) | Spike medium Mean (%) | Spike low Mean (%) |
|--------------------------|---------------------|-----------------------|--------------------|
| Serum                    | 80                  | 78                    | 80                 |
| Plasma (EDTA)            | 71                  | 71                    | 66                 |
| Cell culture supernatant | 102                 | 111                   | 128                |

### 13.4. Dilution Linearity

Serum, plasma (EDTA) and cell culture supernatant samples with different levels of mouse IL-15/IL-15R were analysed at serial 2 fold dilutions with 2 replicates each.

For data see Table 6.

Table 6

| Sample matrix            | Dilution | Recovery of Exp. Val.<br>Mean (%) |
|--------------------------|----------|-----------------------------------|
| Serum                    | 1:4      | 92                                |
|                          | 1:8      | 101                               |
|                          | 1:16     | 110                               |
| Plasma (EDTA)            | 1:4      | 104                               |
|                          | 1:8      | 117                               |
|                          | 1:16     | 114                               |
| Cell culture supernatant | 1:4      | 106                               |
|                          | 1:8      | 105                               |
|                          | 1:16     | 111                               |

### 13.5. Sample Stability

#### 13.5.1. Freeze-Thaw Stability

Aliquots of serum samples (spiked) were stored at -20°C and thawed 3 times, and the mouse IL-15/IL-15R levels determined. There was no significant loss of mouse IL-15/IL-15R immunoreactivity detected by freezing and thawing.

#### 13.5.2. Storage Stability

Aliquots of serum (spiked) were stored at -20°C, 2-8°C, room temperature (RT) and at 37°C, and the mouse IL-15/IL-15R level determined after 24 h. There was no significant loss of mouse IL-15/IL-15R immunoreactivity detected under above conditions.

### 13.6. Specificity

Recombinant mouse IL-15 has a cross reactivity of 2% in this assay when spiked in excess (100 ng/ml).

The specificity of this ELISA has been confirmed with bone-marrow derived dendritic cells from IL-15 knock-out mice; Tissue culture supernatant from these cells following lipopolysaccharide (LPS) stimulation was negative for the presence of IL-15/IL-15R complex while wild type animals reveal more than 40 pg/ml.

### 13.7. Expected Values

Panels of 40 serum as well as plasma samples (EDTA) from randomly selected donors (males and females) were tested for mouse IL-15/IL-15R. For detected mouse IL-15/IL-15R levels see Table 7.

| Sample Matrix | Number of Samples Evaluated | Mean (pg/ml) | Range (pg/ml) | Standard Deviation (pg/ml) |
|---------------|-----------------------------|--------------|---------------|----------------------------|
| Serum         | 8                           | 8.3          | 6.1 – 7.4     | 1.8                        |
| Plasma (EDTA) | 4                           | 6.7          | 6.3 – 7.4     | 0.5                        |

## 14. REAGENT PREPARATION SUMMARY

### 14.1 Wash Buffer (1x)

Add **Wash Buffer Concentrate** 20x (50 ml) to 950 ml distilled water.

| Number of Strips | Wash Buffer Concentrate (ml) | Distilled Water (ml) |
|------------------|------------------------------|----------------------|
| 1 – 6            | 25                           | 475                  |
| 1 – 12           | 50                           | 950                  |

### 14.2 Assay Buffer (1x)

Add **Assay Buffer Concentrate** 20x (5 ml) to 95 ml distilled water.

| Number of Strips | Assay Buffer Concentrate (ml) | Distilled Water (ml) |
|------------------|-------------------------------|----------------------|
| 1 – 6            | 2.5                           | 47.5                 |
| 1 – 12           | 5.0                           | 95.0                 |

### 14.3 Biotin-Conjugate

Make a 1:100 dilution of **Biotin-Conjugate** in Assay Buffer (1x):

| Number of Strips | Biotin-Conjugate (ml) | Assay Buffer (1x) (ml) |
|------------------|-----------------------|------------------------|
| 1 – 6            | 0.03                  | 2.97                   |
| 1 – 12           | 0.06                  | 5.94                   |

### 14.4 Streptavidin-HRP

Make a 1:200 dilution of **Streptavidin-HRP** in Assay Buffer (1x):

| Number of Strips | Streptavidin-HRP (ml) | Assay Buffer (1x) (ml) |
|------------------|-----------------------|------------------------|
| 1 - 6            | 0.03                  | 5.97                   |
| 1 - 12           | 0.06                  | 11.94                  |

### 14.5 Mouse IL-15/IL-15R Standard

Reconstitute lyophilized **mouse IL-15/IL-15R** with Calibrator Diluent. (Reconstitution volume is stated on the label of the Quality Control Sheet.)

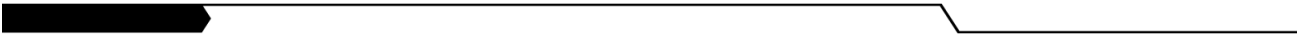
## 15. TEST PROTOCOL SUMMARY

---

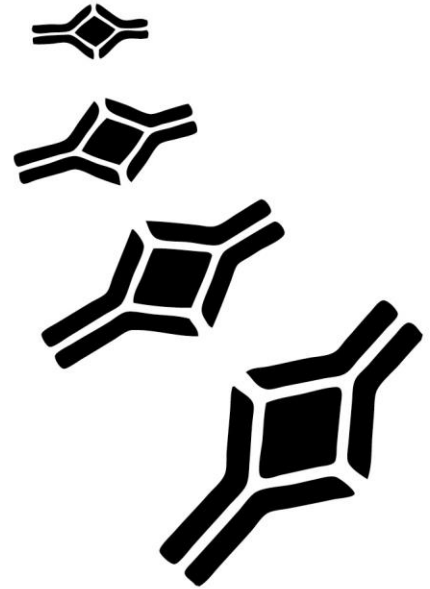
1. Determine the number of microwell strips required.
2. Wash microwell strips twice with Wash Buffer.
3. Add 50 µl of Sample Diluent to the all wells.
4. Add 50 µl standard in duplicate to designated standard wells
5. Add 50 µl of Calibrator Diluent in duplicate to the blank wells.
6. Add 50 µl of each sample in duplicate to the sample wells.
7. Prepare Biotin-Conjugate (see **Chyba! Nenalezen zdroj odkazů.**).
8. Add 50 µl diluted Biotin-Conjugate to all wells.
9. Cover microwell strips and incubate 2 hours at room temperature (18°-25°C), on a microplate shaker.
10. Prepare Streptavidin-HRP.
11. Empty and wash microwell strips 4 times with Wash Buffer.
12. Add 100 µl diluted Streptavidin-HRP to all wells.
13. Cover microwell strips and incubate 1 hours at room temperature (18°-25°C), on a microplate shaker.
14. Empty and wash microwell strips 4 times with Wash Buffer.
15. Add 100 µl of TMB Substrate Solution to all wells.
16. Incubate the microwell strips for about 30 minutes at room temperature (18°C to 25°C)
17. Add 100 µl Stop Solution to all wells.
18. Blank microwell reader and measure colour intensity at 450 nm.

**Note: If instructions in this protocol have been followed, samples have not been diluted and the concentration read from the standard curve must not be multiplied by a dilution factor.**

NOTES







**BioVendor – Laboratorní medicína, a.s.**

Karasek 1767/1, 621 00 Brno, Czech Republic

Phone: +420-549-124-185, Fax: +420-549-211-460

E-mail: [info@biovendor.com](mailto:info@biovendor.com), [sales@biovendor.com](mailto:sales@biovendor.com)

Web: [www.biovendor.com](http://www.biovendor.com)

There are BioVendor branches and distributors near you.

To find the office closest to you, visit [www.biovendor.com/contact](http://www.biovendor.com/contact)

